



## Car Stereo MP3 Player with PLL FM/AM Stereo Radio, USB-Port, MMC/SD Card Reader. Bluetooth.4x45W.

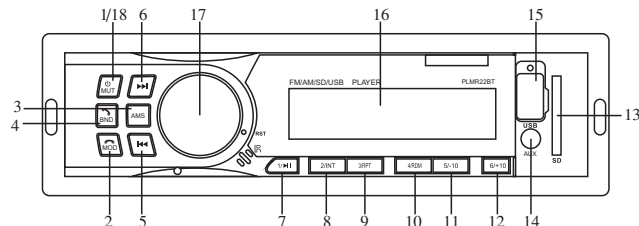
### PLMR22BT

#### Instruction Manual



1

## OPERATION MANUAL



## LOCATION OF CONTROL

1. Power ON/OFF
2. Function Selector (radio/usb/sd/aux-in/bt) & Hang Up the Phone
3. Auto Seek Search Tuning (AMS)
4. Band Button (FM1-FM2-FM3-AM1-AM2) & Answer the Phone
- 5/6. Track Skip/ Search Forward/ Backward , Manual Auto Search Radio
7. Memory Station 1~6 for Radio and Play/pause Function for MP3/WMA
8. Intro Function for MP3/WMA
9. Repeat Function for MP3/WMA
10. Random Function for MP3/WMA
11. -10 Function for MP3/WMA
12. +10 Function for MP3/WMA
13. SD Card Slot
14. Aux In Jack
15. USB Port
16. LCD Display
17. Volume / Select Control
18. MUTE Button

*Bluetooth: Search for Bluetooth devices on your phone. Pair to the stereo using the Bluetooth Network Name "Pyle Audio" and password "0000".*

2

## INSTRUCTION MANUAL

Please read this instruction manual carefully and familiarize yourself with your new car-Radio before using it for the first time. Please retain this manual for future reference.

## FEATURES

The Unit Features FM/AM Stereo with USB&SD/MMC Port and :

- Electronic PLL Tuning Control with 30 Memory Stations
- MP3/WMA Files Reader
- Preamplified Line-out
- Front Audio Aux-in
- USB Port and SD/MMC Input
- Last Track Memory (RADIO & SD/MMC & USB)

## OPERATING INSTRUCTIONS

### 1.POWER ON/OFF

Short press turn on, long press three seconds turn off.

### 2.MODE--FUNCTION SELECTOR

Push this button repeatedly and the lcd will display the following sequence:

RADIO → USB → SD→ AUX-IN→BT.

In bluetooth mode, short press to hang up the phone.

### 3.AUTO SEEK SEARCH TUNING (AMS)

In radio mode, short press for the browser, long press to automatically save the station.

In playback mode, the function is to choose the song.

### 4.BAND BUTTON

In radio mode, each band is toggled cyclically by pressing the key FM1-FM2-FM3.

In bluetooth mode, short press to answer the phone.

### 5./6. ⏮/⏭ BUTTON

Track skip in MP3 player mode (usb/sd/mmc) / radio search; Press the button during playback to go to the desired track; Press to search to the desired radio station.

### 7. 1/⏮ BUTTON

Memory station 1-6 for radio control the playback of your music coming through the usb or sd/mmc external device by pressing once to start playback. During "play" repress the button to pause playback. Press the button once more to resume play.

3

## OPERATING INSTRUCTIONS

### 8. 2/INT BUTTON

When this button is pressed, 'INT' indication is displayed and the first several seconds of each track is played. Press again to stop intro and listen to track.

### 9. 3/RPT BUTTON

When this button is pressed, 'RPT' indication is displayed and the selected track will be continually repeated until the track repeat mode is cancelled by pressing the 'RPT' button again.

### 10. 4/RDM BUTTON

When this button is pressed, 'RDM' indication is displayed and the tracks are played in random instead of normal progression. To cancel random mode, press the 'RDM' button again.

### 11. 5/-10 BUTTON

In playback mode, short press to -10, long press to choose a folder.

### 12. 6/+10 button

In playback mode, short press to -10, long press to choose a folder.

### 13.SD CARD SLOT

Insert the SD/MMC card in the slot by pushing it gently inward. Select SD with the mode selector. The music starts to play automatically.

\* Support music file format: MP3,WMA .

### 14.AUX IN JACK

Insert your portable player into the jack, in any playing mode, audio will come through the car speaker.

### 15.USB PORT

Use a usb cable (not included) if necessary, to connect your portable mp3 player.

### 16.LCD DISPLAY

The LCD display show the actual reception and function.

### 17.VOLUME / SELECT CONTROL

Rotate the volume knob to control the volume. To select other function, Press the select button shortly until the desired function is shown on the display.

\* volume (rotate knob) →select (push down) →bass→treble  
balance→fader→loud→ EQ (flat-pop-classic-rock)

### 18.MUTE BUTTON

Short press to Mute On/ Off. When muted, all audio output is suppressed.

4

SPECIFICATIONS

FM TUNER

Frequency Range	87.5-107.9MHz
Sensitivity	10 dBu
I.F. Frequency	10.7MHz
Frequency Response	80Hz - 12kHz (±3dB)
Stereo Separation	>25dB
S/N Ratio	>50dB

AM TUNER

Frequency Range:	510 - 1710KHz
IF Range:	450KHz
Usable Sensitivity (-20dB):	32dB


GENERAL

Power Supply Voltage	12 V DC, Negative Ground
Max Current Consumption	5 A
Max Output Power	4CH x 45W

**Note:** Specifications and the design are subject to possible modification without notice due to improvement.

WARNING

Use the specified amperage fuse for each lead. Use of a higher amperage fuse may cause serious damage.



**Correct Disposal of This Product  
(Waste Electrical & Electronic Equipment)**

This marking shown on the product or its literature .indicates that it should not be disposed with other household wastes at the end of its working life. To prevent possible harm to the environment or human health from uncontrolled waste disposal, please separate this from other types of wastes and recycle it responsibly to promote the sustainable reuse of material resources.

Household users should contact either the retailer where they purchased this product, or their local government office, for details of where and how they can take this item for environmentally safe recycling. Business users should contact their supplier and check the terms and with other commercial wastes for disposal.

INSTALLATION

- Remove the stereo carefully from the box, retaining the packaging for future use (Servicing)

PRECAUTIONS

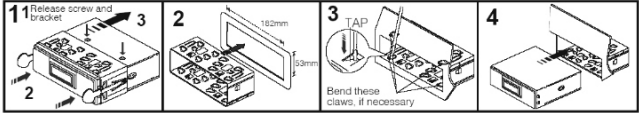
- Choose the mounting location carefully so that the unit will not interfere with the normal driving functions of the driver.
- Avoid installing the unit where it would be subject to high temperatures, such as from direct sunlight or hot air from the heater, or where it would be subject to dust, dirt or excessive vibration.
- Use only the supplied mounting hardware for a safe and secure installation.

MOUNTING ANGLE ADJUSTMENT

- Adjust the mounting angle as desired.

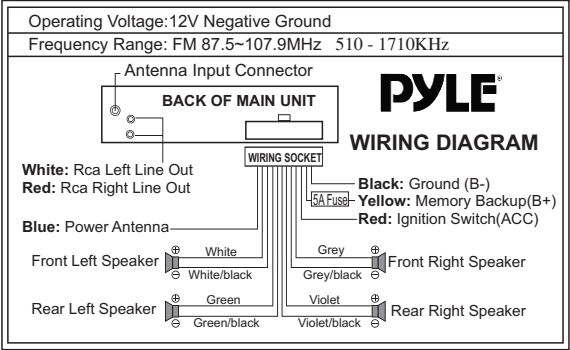
MOUNTING EXAMPLE

Installation In the dashboard



*Note: Keep the release Key in the safe place as you may need it in future to remove the unit from the car .*

WIRING DIAGRAM



MAINTENANCE

Fuse Replacement

If the fuse blows, Check the power connection and replace the fuse. If the fuse blows again after the replacement, There may be an internal malfunction. In this case, Consult your nearest repairing center.